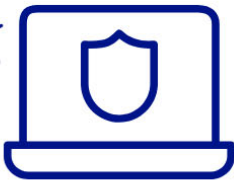


# 2018 Year in Review



**1,427,079**  
Calls From Citizens

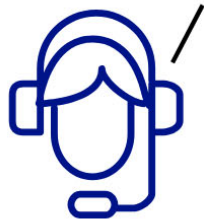
**836,154**



**Police/Citizen Interactions**

Contacts are created any time JSO officers interact with a citizen, whether called to a scene OR an individual officer comes upon a scene requiring further investigation (on-view).

**475,742**  
Dispatched  
Calls



**360,412**  
Officer  
On-View



**41,607** Arrests

Arrests were made in 5.16% of all Police/Citizen Interactions completed  
(1 in 22 per capita)



**509** Response to Resistance  
Incidents (RTR)

Force was used in 0.63% of Police/Citizen Interactions and  
in 1.2% of all Arrests made.  
(1 in 1,820 per capita)



**5** Officer Involved Shootings of Suspects (OIS)

0.0006% of all Police/Citizen Interactions involved OIS incidents. 0.01% of all Arrests made included OIS incidents. 0.98% of all RTR Incidents involved OIS incidents.  
(1 in 185,252 per capita)

**Response to Resistance Incident (RTR):** The incident which involves an application of force.

**Use of Force:** The actual application of force whereby an officer utilizes a within-policy maneuver and/or technique to establish control of the subject(s).

**Methods of Use of Force include:** Taser / Physical / Chemical / Impact / Firearm